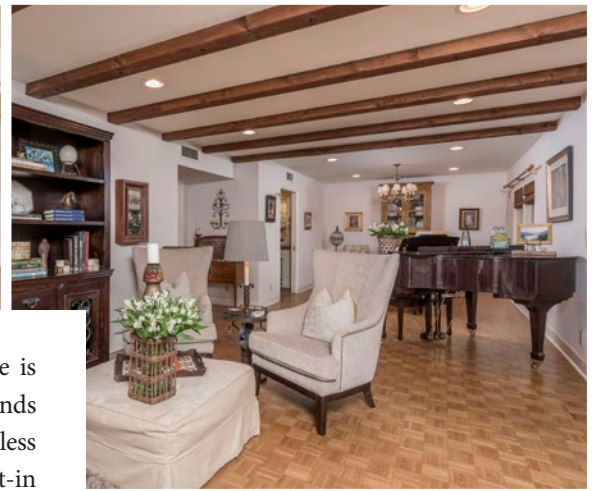




WALT DANLEY REALTY

5829 East Joshua Tree Lane  
Paradise Valley, Arizona

6 BR | 5.5 BA | 3,538 SQ FT  
\$1,695,000 | MLS# 5734461



Combining privacy and spectacular mountain views this beautiful Paradise Valley home is tucked away on a 1.26 acre lot. This 3,538 square foot, five bedroom/four bath main house blends livability with indoor/outdoor living. Two separate front and backyard patios provide endless entertaining options that include a pool, fireplace and fire-pit. The remodeled designer eat-in kitchen offers Thermador and Bosch appliances and Carrera countertops. Parquet and brick flooring add to the character of this charming home and French doors open to the patios with mountain views. The 1,350 square foot two bedroom guest house is complete with a great room, kitchen, fireplace, one car garage and intimate front and back patios with Camelback views.

**Karen Pratte** Walt Danley Realty  
KarenP@WaltDanley.com | 602.228.4377 480.991.2050



WALT DANLEY  
REALTY

CHRISTIE'S  
INTERNATIONAL REAL ESTATE